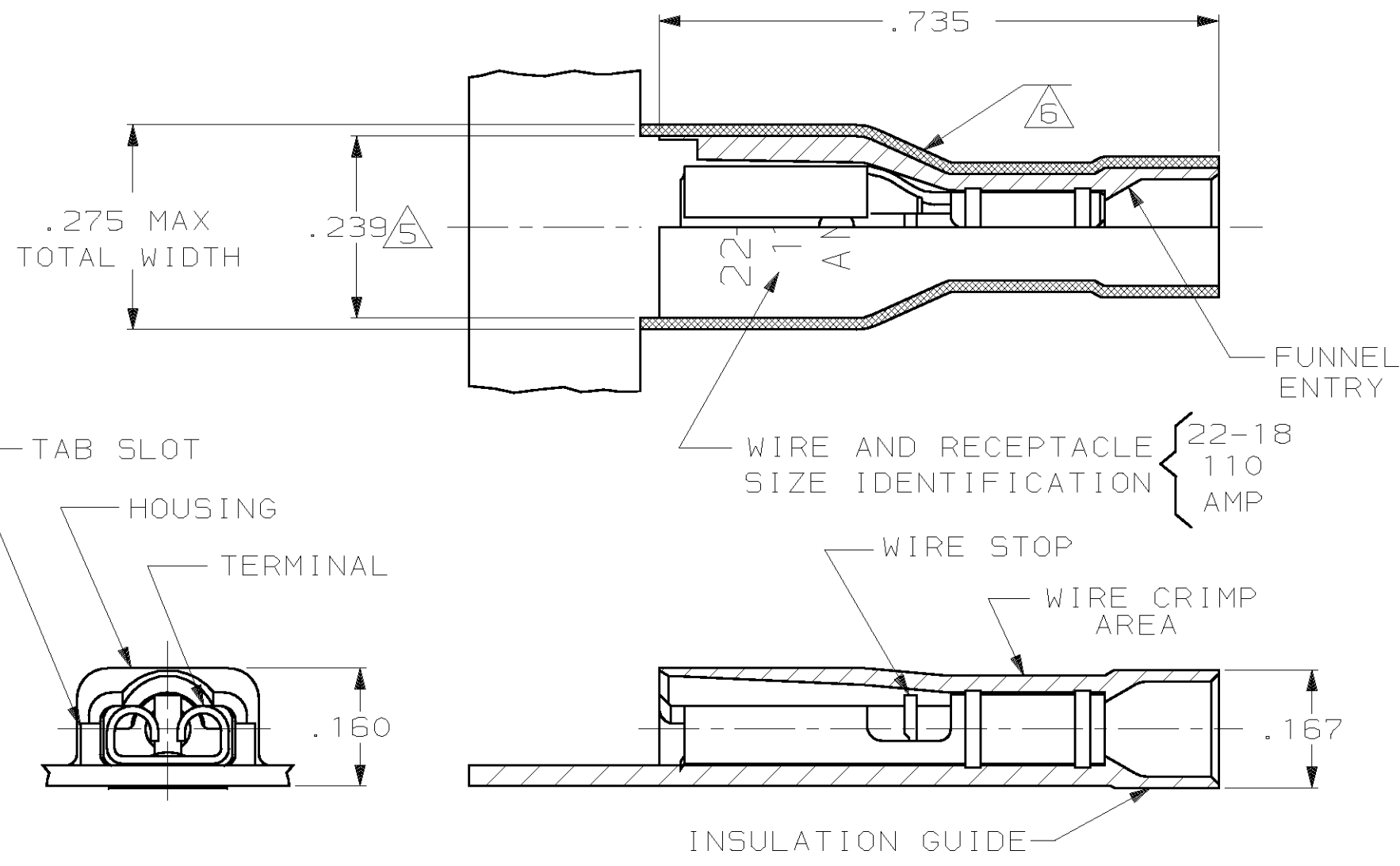


THIS DRAWING IS UNPUBLISHED. RELEASED FOR PUBLICATION, 19
 © COPYRIGHT 19 BY AMP INCORPORATED. ALL INTERNATIONAL RIGHTS RESERVED.

LOC AF	DIST 50	P	F	REVISIONS			DATE	APPD
				ZONE	LTR	DESCRIPTION		
					F	REV PER 0G1A-0147-99	3JUN99	JR/JH



- 1 MATES WITH .032±.001X.110 OR .125 TAB
- 2 WIRE STRIP LENGTH .281
- 3 INSULATION RANGE .060-.120
- 4 CONTINUOUS STRIP ON REELS
- 5 DIMENSION DOES NOT INCLUDE TRIM BURR
- 6 .015 MAX CARRIER TRIM BURR PER SIDE IS ALLOWABLE IN THE SHADED AREA

HOUSING: NYLON, COLOR-RED TRANSLUCENT		RECEPTACLE: #3 HARD BRASS		TIN PL .000080 MIN THK		2-520979-2	
MATERIAL & FINISH						PART NO	
DO NOT SCALE PRINT. UNLESS SPECIFIED DIMENSIONS IN INCHES TOLERANCES ON: 2 PLC DEC ± - 3 PLC DEC ± .015 ANGLES ± -		DR 10/5/90 JR RUTH CHK 10/5/90 P FORTNEY APPD 10/5/90 D BRATINA APPD 10/5/90 R KUZO PRODUCT SPEC 108-2044 APPLICATION SPEC 114-2123 WEIGHT -		AMP INCORPORATED Harrisburg, Pa. 17105 NAME RECEPTACLE ASSEMBLY, ULTRA-FAST PLUS, .110/.125 SERIES, 22-18 AWG SIZE B FSCM NO 00779 DRAWING NO 520979 SCALE 5:1 SHEET 1 OF 1			
MATERIAL SEE TABLE		FINISH SEE TABLE					